

Media Contact: PJ Watters, [pjwatters@inwcf.org](mailto:pjwatters@inwcf.org)  
Inland Northwest Community Foundation  
618 West Riverside Avenue, Suite 302  
Spokane, WA 99201-5102  
509-624-2606 / 888-267-5606  
[www.inwcf.org](http://www.inwcf.org)



---

## **FOR IMMEDIATE RELEASE**

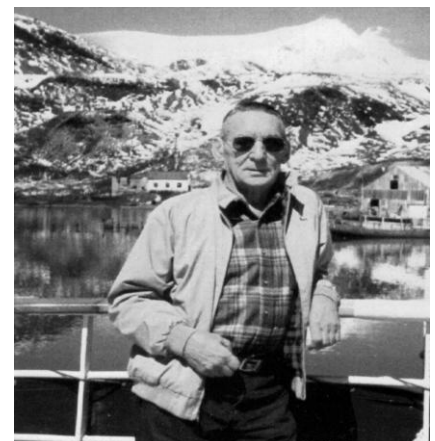
### **Inland Northwest Community Foundation announces Community Strategies Grant Program recipients**

*SPOKANE, WA, 12-22-2011* – Inland Northwest Community Foundation (INWCF) is pleased to award more than \$250,000 this month through the Community Strategies Grant Program. Grants will fulfill one of the three following goals: increase sustainable economic development; increase stewardship of natural and cultural resources; or increase civic capacity to constructively engage in solving community problems.

Two philanthropists are among those who made the \$250,000 in grant funding possible: Margaret Featherstone Galbraith of North Idaho and Sam Leuthold of Eastern Washington. We want to honor their memory by sharing their stories.

Before she passed away in 2005, Margaret Galbraith arranged gifts to INWCF totaling nearly \$12 million. Her father Albert Featherstone was a lawyer, deputy sheriff, district judge, served as a member of the Idaho State Legislature, a pioneer for the North Idaho mining industries and established light and water companies through North Idaho. Margaret was a bookkeeper and a very astute investment manager of her own money. She was quietly generous throughout her lifetime. Her legacy is the Margaret F. Galbraith Fund, which has already provided \$1.4 million in grants since 2005 through the Community Strategies Grant Program, including some noted below.

Sam Leuthold's parents, Walter and Grace Leuthold, traveled west in the late 1920s to start a lumber company in Deer Park, Washington. Sam continued the family business, Deer Park Pine



Industries and it thrived. Sam met his beautiful wife Betty in Texas when he was in the service and they made their permanent home in Spokane and Hayden Lake, Idaho. The Leutholds liked to travel and were involved with many local charitable organizations. They created the Leuthold Foundation in 1948 with \$37,500. By 1996, the Leuthold Foundation had grown to \$7.5 million, and the family transferred its assets to INWCF. Since that time, the Leuthold Fund has distributed more than \$2.3 million in grants.

Grants made possible by Margaret Galbraith include \$15,000 to Fresh Start, Inc., a North Idaho organization that assists people who are homeless, abused and mentally ill become contributing members of society. The funding supports the Fresh Start Homeless Day Center in Kootenai County providing food, laundry facilities, showers, restrooms, a mailing address, telephone and internet access and clothing to anyone in need of assistance. The center can serve 50 people in a typical day. In 2010, they provided services for more than 15,000 clients.

In eastern Washington, the Leuthold Fund provided a \$30,000 grant to the YWCA of Spokane for their Women's Opportunity Center. The YWCA is dedicated to eliminating racism, empowering women and promoting peace, justice, freedom and dignity for all. The mission of the Opportunity Center is to empower Spokane's economically disadvantaged women to increase their earning potential and pursue financial independence. Approximately 1,800 unemployed and underemployed women annually receive job readiness assistance, financial education, referral services and emotional support. Program components include the Job Readiness Program, Our Sister's Closet (a free professional clothing boutique) and a staffed computer lab.

Other grant awards are listed below alphabetically by state, then by county:

## *Idaho*

### Bonner County

- NAMI Far North \$6,125 - Crisis Intervention Team Academy #4
- Pend Oreille Arts Council \$10,000 - Arts Education Outreach for Bonner County Youth

### Kootenai County

- Coeur d'Alene Public Library Foundation, Inc. \$14,400 - ReTool Box: Basic Computer Literacy Training
- First Judicial District CASA Program \$20,000 - 1st Judicial District CASA Program
- Post Falls Senior Center \$2,500 - Senior Activities and Wellness Classes
- Trinity Group Homes, Inc. \$23,858 - Provide Additional Homes for Individuals with Mental Illness

### Lewis County

- Upper Clearwater Community Foundation \$6,652 - Kamiah Community Pool Aquatic Lift
- Shoshone County Women's Resource Center \$10,000 - Shoshone County Women's Resource Center
- Wallace District Mining Museum \$12,000 - Square Set Exhibit Expansion

### *Washington*

#### Ferry County

- Ferry County Historical Society \$15,000 - Slagle Wash House Adaptive Reconstruction

#### Spokane County

- Whitworth University \$4,223 - The Wisdom of SpokOZ, a community presentation about poverty awareness.
- Partners with Families and Children: Spokane \$30,000 - Children's Advocacy Center
- Catholic Charities Spokane \$15,000 - Volunteer Chore Services of Eastern Washington
- Junior Achievement of the Inland Northwest \$15,000 - JA of the Inland Northwest Operating Support
- Reach for the Future! \$10,000 - Reach for the Future!

#### Stevens County

- Spokane Tribe of Indians \$15,000 - Spokane Tribal Elder Services Center Construction Project

For more information on INWCF and its work in the Inland Northwest, please visit our Web site at [www.inwcf.org](http://www.inwcf.org)

#### About INWCF

Founded in 1974, INWCF serves 10 Eastern Washington counties and 10 North Idaho counties to foster vibrant and sustainable communities in the Inland Northwest. The community foundation manages more than 305 funds valued at more than \$67 million and has awarded \$39 million in grants and scholarships since its inception, positively impacting thousands of lives in this region.

###